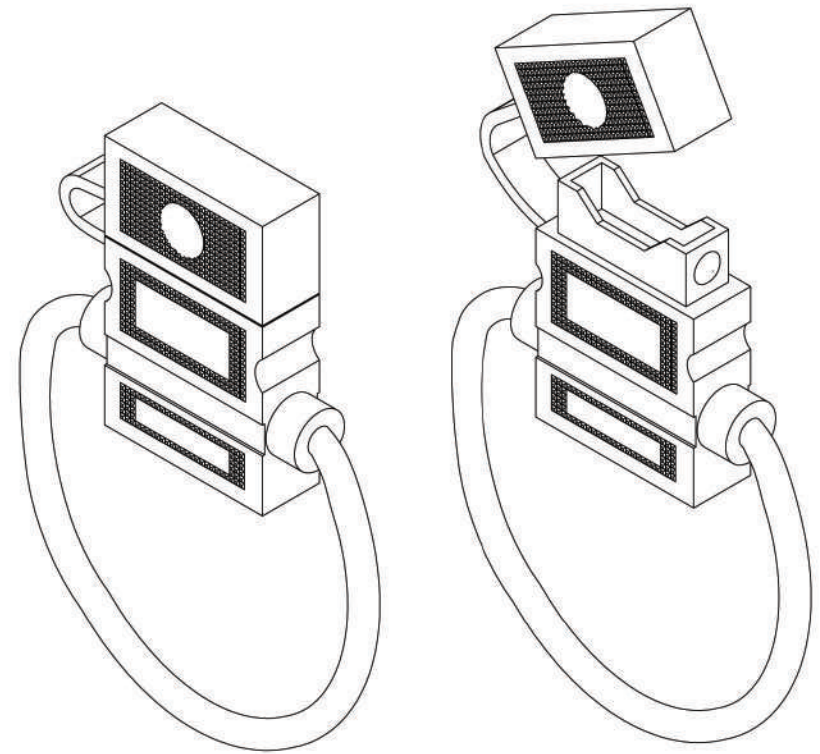
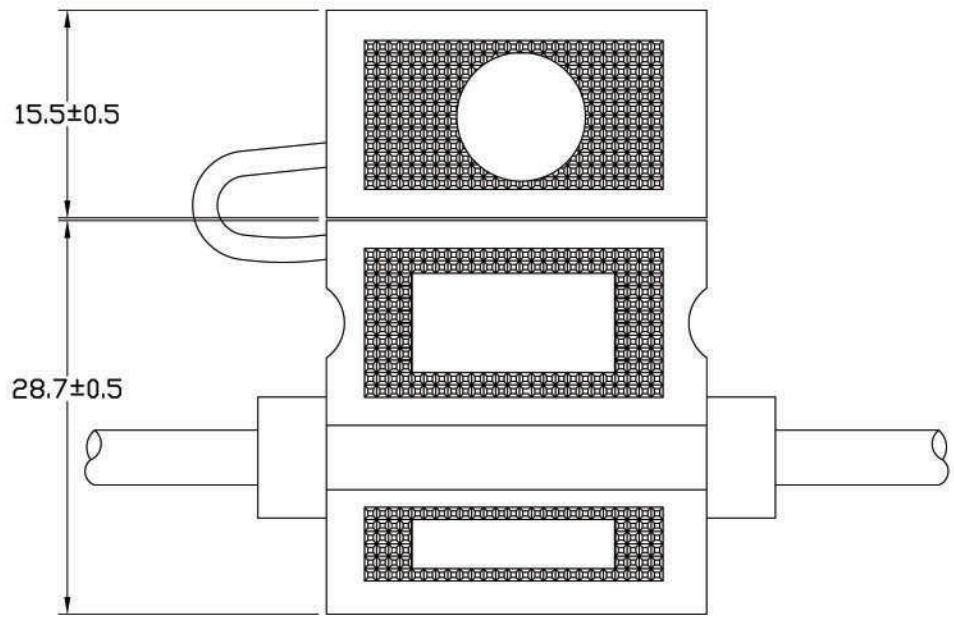
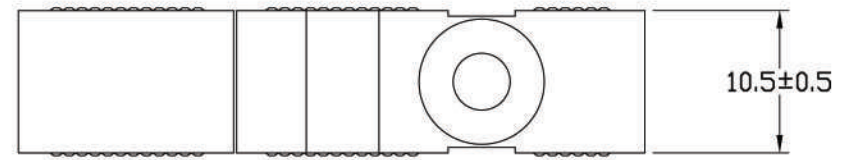
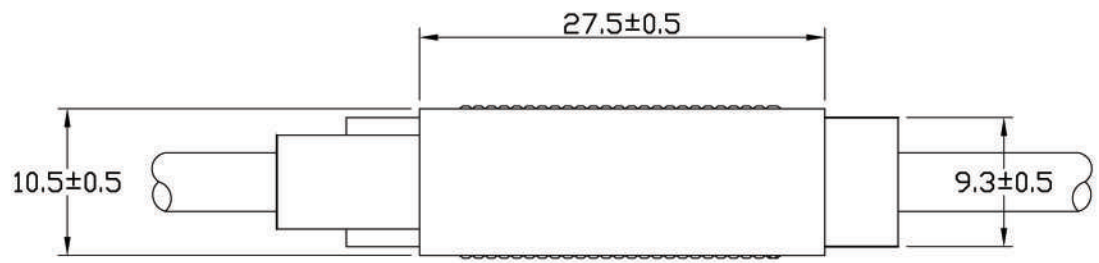


⚠	REV	DESCRIPTION	DATE	E.C.N.
	1.0	Initial Release		



**IN-LINE FUSEHOLDER FOR ATC FUSES
(ADD CAP)**

SPECIFICATIONS:

Electrical: Rated for currents up to 30A
 Insulating Body: PVC
 Contacts: Brass

UNLESS OTHERWISE SPECIFIED DIMENSIONS ARE IN MM TOLERANCE DECIMALES ANGULAR xx ± ± 1° xxx ± DO NOT SCALE DRAWING	CONTRACT NO.	DONGGUAN TIANRUI ELECTRONIC CO., LTD.
	DRAWN BY	TITLE
⊕ ▯	CHECKED BY	FUSE HOLDER
MATERIAL	DESIGNED BY	PART NO. SL-709
TREATMENT	DATE: 2006/01/05	DRAWING NO. BA06010507